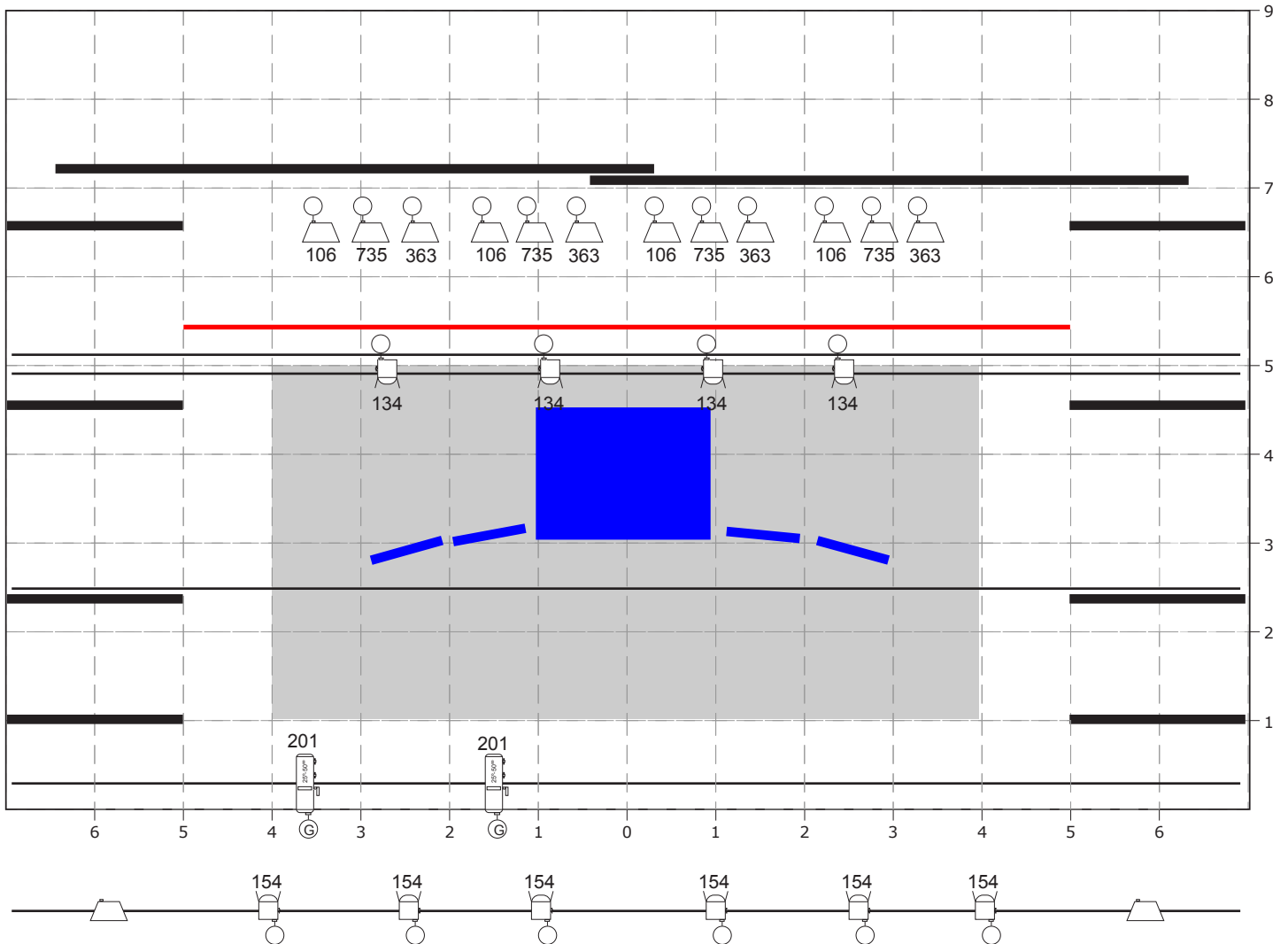






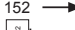

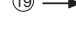
TEATRO CHE Y MOCHE - "DE ACA Y DE ALLA"

ILUMINACION CON CICLORAMA



LEYENDA

-  → Recorte ETC 750W. 23°-50° (O similar) -- 2 (2 PORTAGOBOS)
TAMAÑO DE GOBO 86mm. - PORTAGOBOS TIPO B
-  → Recorte ETC 750W. 15°-32° (O similar) -- 0
-  → PC 1.000 w. --10
-  → PAR 64 n°5 -- 0
- PANORAMA 1.000 W. -- 12

-  → Lee Filtro
-  → Gobo
-  → Canal

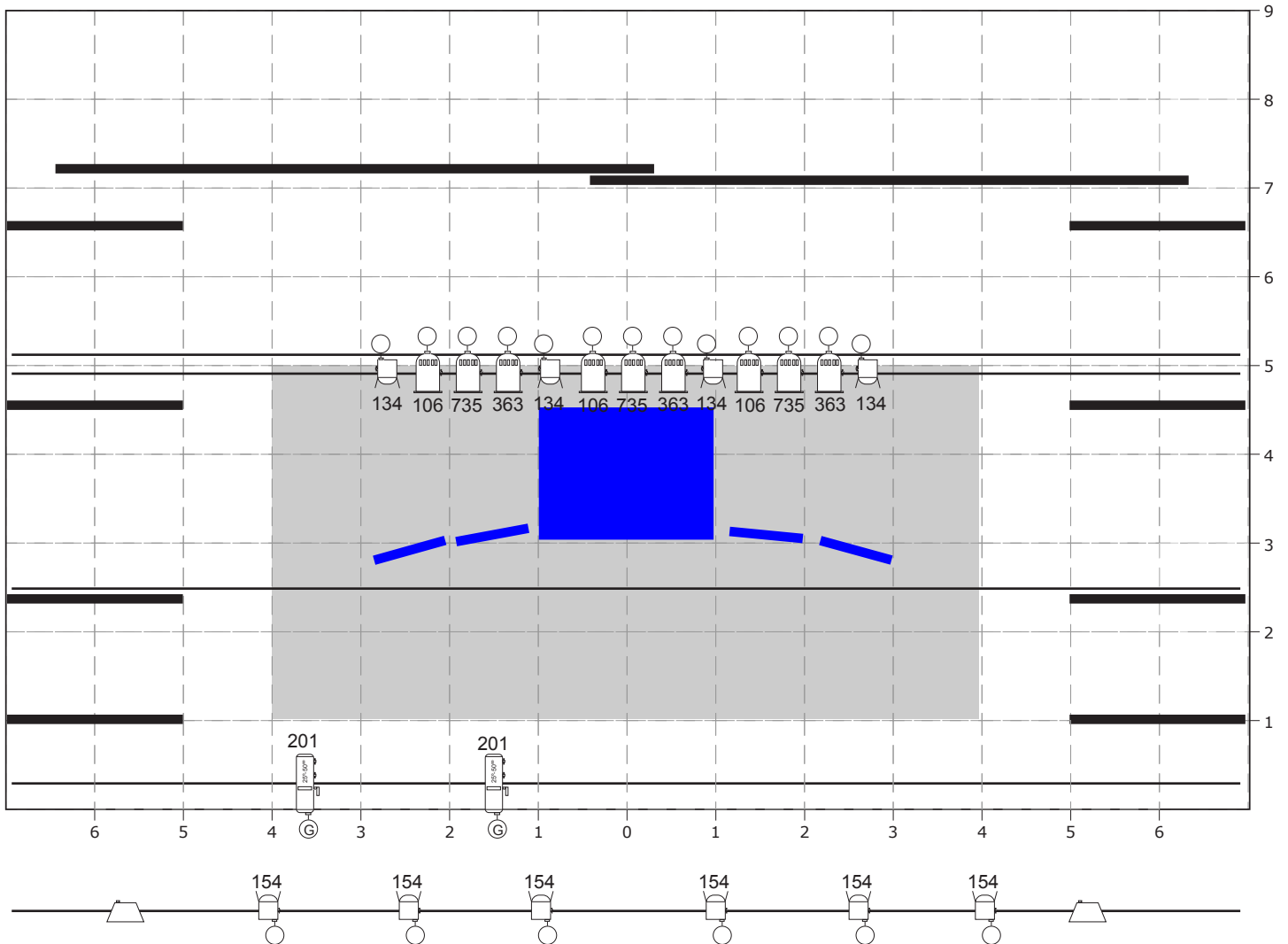
-  → Soporte Suelo

CANALES DIMMER - 13






Diseño: Tatoño
taton@teatrocheymoches.es

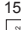


TEATRO CHE Y MOCHE - "DE ACA Y DE ALLA"

ILUMINACION SIN CICLORAMA



LEYENDA

-  → Recorte ETC 750W. 23°-50° (O similar) -- 2 (2 PORTAGOBOS)
TAMAÑO DE GOBO 86mm. - PORTAGOBOS TIPO B
-  → Recorte ETC 750W. 15°-32° (O similar) -- 0
-  → PC 1.000 w. -- 10
-  → PAR 64 n°5 -- 9
-  → PANORAMA 1.000 W. -- 0

-  → Lee Filtro
-  → Gobo
-  → Canal

-  → Soporte Suelo

CANALES DIMMER - 13

Diseño: Tatoño
taton@teatrocheymoché.es